

MAJOR FOOD DISTRIBUTION WAREHOUSE ONLINE AUCTION

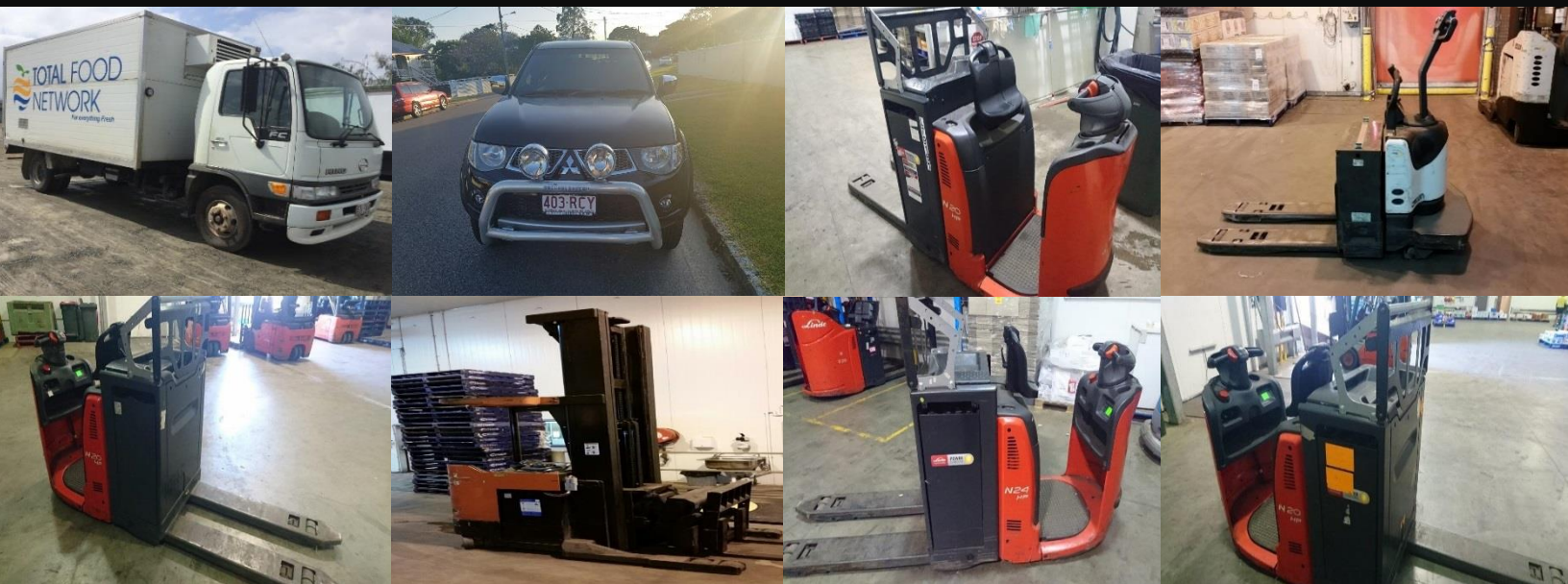
(Under instructions from Total Food Network due to assets surplus to their requirements)

Commencing: Wednesday 23rd November 2016, 9:00 am

Closing: Wednesday 30th November 2016, 1:00 pm (Bidder Extension Active)

For more information contact Terry Knight 0432 772 763 or by email t.knight@globalvaluers.com.au

Located: Please refer to lot description for asset location – **Strictly Inspection by Appointment Only.**



2010 Mitsubishi Triton Utility GLX-R Series MN (4x4) Dual Cab Vin No: MMAJNKB40AD015831, Engine No: 4D56UCCA1670, Colour: Black, Odometer Reading: 136,805 kms, Tare: 1,977kg GVM: 2,930kg, 5 Speed Manual Transmission, 4 Cylinder Diesel 2.5L Turbo, 4-Door, 5-Seater, Fitted with AC, PS, Alloy Nudge Bar, Sports Bar, Tow Bar, Spot Lights, Side Steps, As new Tyres. (Please Note: Sold Registered approx. 8 months remaining), (Located at Wooloowin QLD). **1997 Hino Ranger Truck Model: FC Series, Series- FC3J**, Vin No: JHDFC3JJKXXX10257, Engine No: J07CB10822, Odo Indicating - 272, 7325kms, 5 Speed Diesel, 4 Cylinder, Fitted with Thermo King Freezer Body 6 Pallet, 2 Way Power, (Located at 81 Fernley St Port Smith, Cairns QLD). **1 Crown Electric Pallet Truck Model: PE-4500-60**, Lift Capacity: 3000Kg Battery: 24 Volt/ 525 Amp Hour, Hours Indicating N/A, with Charger, (Located at 81 Fernley St Port Smith, Cairns QLD). **1 BT Electric Reach Truck Crown – Model: BT RDX 30**, Lift Capacity: 1359Kg @7.62M / 1223Kg @8.38M Battery: 36 Volt/ 875 Amp Hour, Hours Indicating 5851, with Charger, (Located at 81 Fernley St Port Smith, Cairns QLD). **2012 Electric Order Picker Linde, Model: N20HP, 68X115, 4pzsSLH**, Serial No: W4X132C02377, Lift Capacity 2000Kg @ 2350mm, 24 Volt/ 680 Amp Hour, Hours Indicating 896, with Charger, (Located at 81 Fernley St Port Smith, Cairns QLD). **2012 Electric Order Picker Linde, Model: N20HP, 68X115, 4pzsSLH**, Serial No: W4X132C01212, Lift Capacity 2000Kg @ 2350mm, 24 Volt/ 680 Amp Hour, Hours Indicating - 832 with Charger, (Located at 81 Fernley St Port Smith, Cairns QLD). **2012 Electric Order Picker Linde, Model: N20HP, 68X115, 4pzsSLH**, Serial No: W4X132C02371, Lift Capacity 2000Kg @ 2350mm, 24 Volt/ 680 Amp Hour, Hours Indicating - 802 with Charger, (Located at 81 Fernley St Port Smith, Cairns QL). **2013 Electric Order Picker Linde, Model: N24HP, 68X215, 4pzsSLH**, Serial No: W4X132D01423, Lift Capacity 2400Kg @ 1150mm, 24 Volt/ 680 Amp Hour, Hours Indicating - 855 with Charger, (Located at 81 Fernley St Port Smith, Cairns QLD).

A 12.5% Buyers Premium is Applicable

For more information please contact
Terry Knight on 0432 772 763
Or email – t.knight@globalvaluers.com.au

globalvaluers.com
business asset solutions