

BUSINESS INSOLVENCY ASSET ONLINE AUCTION SALE

Industrial Joinery - Cabinet Making Plant, Equipment, Motor Vehicles

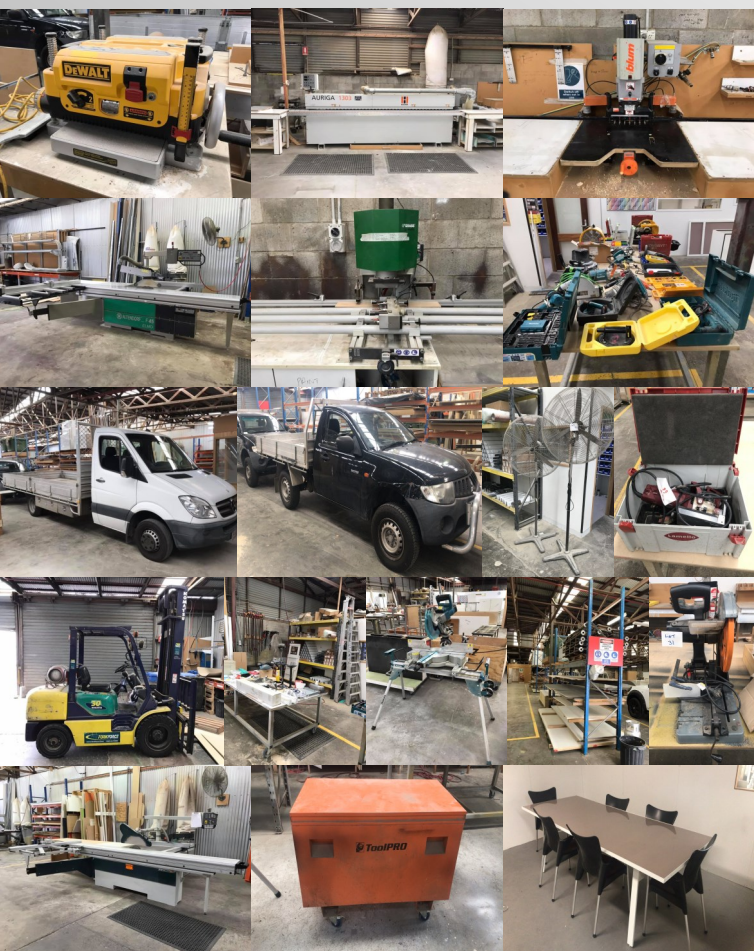
Under Instructions from Mr David Stimpson of SV Partners as Liquidator appointed to Thomas Joinery Pty Ltd (In Liquidation)

Commences: Monday 25th March 2019, 9am

Concludes: Monday, 1st April 2019, 1pm (Time Extension Applies)

Location: Shed 2B, 346 Bilsen Road, Geebung QLD 4034

All lots in this online auction and the terms and conditions for the sale are available at www.globalauctioneers.com – **Online Auctions**. For further information, contact Terry Kirkham on 0418-358469 or terry@globalauctioneers.com



Asset Sale Comprising of: Komatsu FG30-T12 4.5m 2 Stage Gas Powered Forklift, 2013 Holzher Type 1308 Auriga Industrial Edge Banding Machine, G Grass Ecoflex Insert Twin Drilling Machine Mounted on Timber Cabinet Bench, 1999 Altendorf F45 Elmo GE Digital Control Panel 3.8m Sliding Table Panel Saw Bench with Digital Cut Cross System, 2008 Industrial 3.3m Digital Control Panel 3.3m Sliding Table Panel Saw Bench with Digital Cut Cross System, ToolPro Orange Feet Mobile Onsite Toolbox, Makita Sanding Tools & Pads, Slugger 14" Metal Cutter, Lamello AG Zeta P2 Biscuit Joiner, Workshop Trolleys, Pressure Nail Guns, Industrial Fans etc.

Motor Vehicles - 9/2012 Mercedes Benz 3 Seater Long Wheel Base Aluminium Drop Sided Tray Truck with Side Tool Boxes, 2x 2008 Mitsubishi Triton 2 Wheel Drive Aluminium Tray Utilities.

Inspection Dates: Friday 29th (9am - 3:30pm) and Saturday 30th of March 2019 (9am - 12pm)

Asset Collection and Removal Schedule:

Wednesday 3rd and 4th Thursday of April 2019 (8am - 4pm)



12.5% Buyers Premium is Applicable to this sale

For more information please contact
Terry Kirkham on 0418 358 469
Or email - terry@globalauctioneers.com