

## Aluminum & Timber Fabrication Equipment, Stock, Motor Vehicles, Forklift, Racking Onsite Online Auction – Melbourne

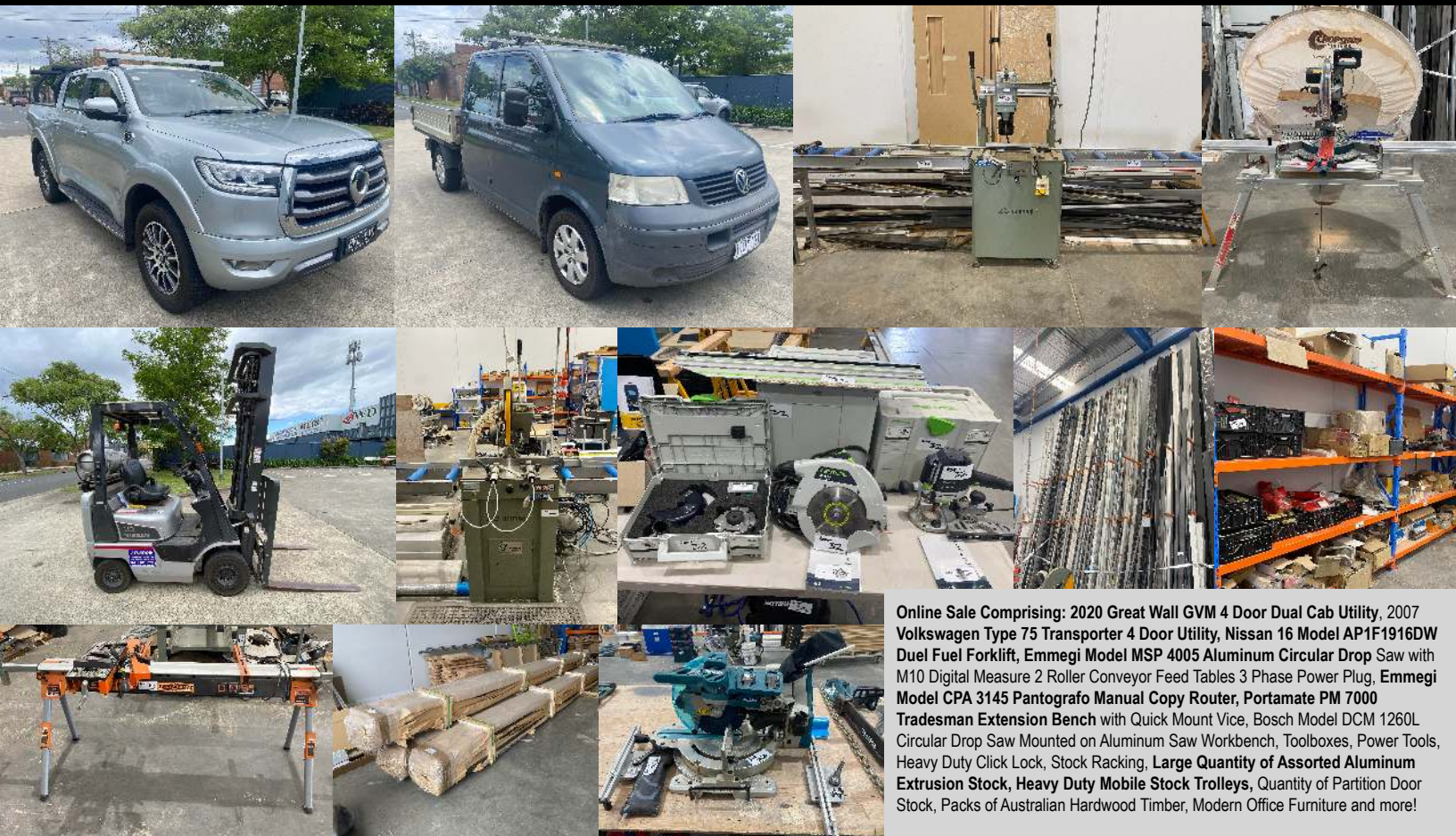
Under Instructions From: Mrs. Alice Ruhe of SMB Advisory as Liquidator Appointed in the matter of: Deko Partitions Australia Pty Ltd (In Liquidation)

**Online Auction Commences: 9am, Monday 5th December 2022 (AEDT - Melb Time)**

**Online Auction Closes: 1pm, Monday 12th December 2022 (Time Bidding Extension)**

The bidding extension function is live for this online auction at the 1pm completion time.

To Register, Bid and View Photographic Catalogue Information [go to www.globalauctioneers.com](http://www.globalauctioneers.com) - **Online Auctions**



Online Sale Comprising: 2020 Great Wall GVM 4 Door Dual Cab Utility, 2007 Volkswagen Type 75 Transporter 4 Door Utility, Nissan 16 Model AP1F1916DW Dual Fuel Forklift, Emmegi Model MSP 4005 Aluminum Circular Drop Saw with M10 Digital Measure 2 Roller Conveyor Feed Tables 3 Phase Power Plug, Emmegi Model CPA 3145 Pantografo Manual Copy Router, Portamate PM 7000 Tradesman Extension Bench with Quick Mount Vice, Bosch Model DCM 1260L Circular Drop Saw Mounted on Aluminum Saw Workbench, Toolboxes, Power Tools, Heavy Duty Click Lock, Stock Racking, Large Quantity of Assorted Aluminum Extrusion Stock, Heavy Duty Mobile Stock Trolleys, Quantity of Partition Door Stock, Packs of Australian Hardwood Timber, Modern Office Furniture and more!

**Onsite Viewing Days:** Friday 9th December (9am - 4pm) and Monday 12th December (9am - 12pm)

**For Enquiries and Inspection:** Contact Terry Kirkham - [terry@globalauctioneers.com](mailto:terry@globalauctioneers.com) or Carlo Bacio 0490 938 658

**Location:** Unit 2, 72-76 Fenton Street, Huntingdale Victoria | **Collection:** By Appointment Only

Note: Due to COVID-19, limited onsite inspections and controlled collection processes are in place with very strict protocols conforming to compliance.

A 13.75% (GST Inc) Buyers Premium Is Applicable to All Lots